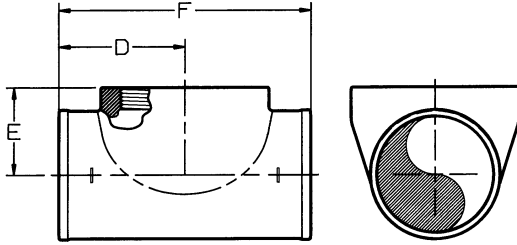




NO-HUB ASA Group 022 TEES, FERRULES, REDUCERS, ADAPTERS & PLUGS

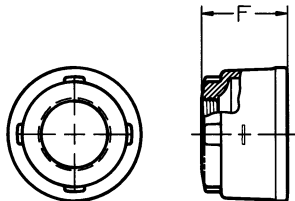


**TEST TEE
(Less Plug)**

Ship Code	UPC No. 670610	Size-IPS	E	F	D	Wt.
S	009429	2-2	2	6 ³ / ₈	3 ³ / ₁₆	2.7
S	009436	3-3	2¹¹/₁₆	7³/₄	3⁷/₈	4.8
S	009443	4-4	3	8 ⁷ / ₈	4 ⁷ / ₁₆	9.4
S	009450	5-5	4¹/₂	11¹/₂	5³/₄	14.7
S	009467	6-6	5	12 ¹ / ₂	6 ¹ / ₄	18.4
S	009474	8-8	6	15¹/₄	7⁵/₈	30.4
S	381501	10-10	6 ¹ / ₂	20	10	59.0

**TEST TEE
(w/ Type A Plug)**

Ship Code	UPC No. 670610	Size-IPS	E	F	D	Wt.
S	011736	2-2	2	6 ³ / ₈	3 ³ / ₁₆	3.0
S	011743	3-3	2¹¹/₁₆	7³/₄	3⁷/₈	5.5
S	011750	4-4	3	8 ⁷ / ₈	4 ⁷ / ₁₆	10.4
S	011767	5-5	4¹/₂	11¹/₂	5³/₄	16.0
S	011774	6-6	5	12 ¹ / ₂	6 ¹ / ₄	20.7
S	011781	8-8	6	15¹/₄	7⁵/₈	33.9

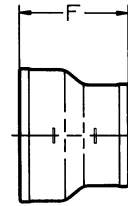


**FERRULE
Less Plug**

Ship Code	UPC No. 671610	Size	F	Wt.
S	009979	2x1 ¹ / ₂	2 ³ / ₁₆	0.4
S	009986	3x2¹/₂	2³/₁₆	0.9
S	009993	4x3 ¹ / ₂	1 ³ / ₄	1.1
S	010005	5x4	4¹/₂	4.0
S	010012	6x5	4 ¹ / ₂	4.7
S	010029	8x6	3¹/₄	7.8

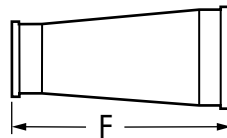
**FERRULE
w/ Type A Plug**

Ship Code	UPC No. 671610	Size	F	Wt.
S	012108	2x1 ¹ / ₂	2 ³ / ₁₆	0.6
S	012115	3x2¹/₂	2³/₁₆	1.3
S	012122	4x3 ¹ / ₂	1 ³ / ₄	1.9
S	012139	5x4	4¹/₂	6.0
S	012146	6x5	4 ¹ / ₂	7.3
S	012153	8x6	3¹/₄	10.1



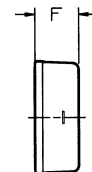
SHORT REDUCER

Ship Code	UPC No. 670610	Size	F	Wt.
S	009665	2x1 ¹ / ₂	3 ⁵ / ₈	1.1
S	382607	3x1¹/₂	3⁵/₈	1.7
S	009672	3x2	3 ⁵ / ₈	1.4
S	009689	4x2	3⁵/₈	2.2
S	009696	4x3	3 ⁵ / ₈	2.2
S	383314	5x2	4	3.3
S	009702	5x3	4	3.7
S	009719	5x4	4	3.6
S	009726	6x2	4	4.3
S	009733	6x3	4	4.8
S	009740	6x4	4	4.2
S	009757	6x5	4¹/₂	5.0
S	009764	8x2	4 ¹ / ₂	7.8
S	009771	8x3	4¹/₂	7.9
S	009788	8x4	4 ¹ / ₂	7.6
S	009795	8x5	5	8.6
S	009801	8x6	5	7.5
S	009818	10x4	5¹/₂	15.0
S	009825	10x6	6	14.3
S	009832	10x8	6	13.0
S	377559	12x4	6 ¹ / ₂	20.0
S	376507	12x6	6¹/₂	20.0
S	376514	12x8	7	21.0
S	376521	12x10	7¹/₂	25.0
S	377566	15x4	7	32.0
S	376750	15x6	7	35.0
S	376538	15x8	7	34.0
S	376545	15x10	7¹/₂	38.0
S	376552	15x12	7 ³ / ₄	37.0



INCREASER-REDUCER

Ship Code	UPC No. 671610	Size	F	Wt.
S	009658	3x4	8	4.6



BLIND PLUG

Ship Code	UPC No. 670610	Size	F	Wt.
S	010036	1 ¹ / ₂	1 ³ / ₄	0.8
S	010043	2	1³/₄	0.7
S	010050	3	1 ³ / ₄	1.2
S	010067	4	1³/₄	2.0
S	010074	5	1 ³ / ₄	2.5
S	010081	6	1³/₄	3.0
S	010098	8	2 ¹ / ₄	6.7
S	010104	10	3	15.5
S	377535	12	3 ¹ / ₂	18.0
S	377542	15	3¹/₂	33.0