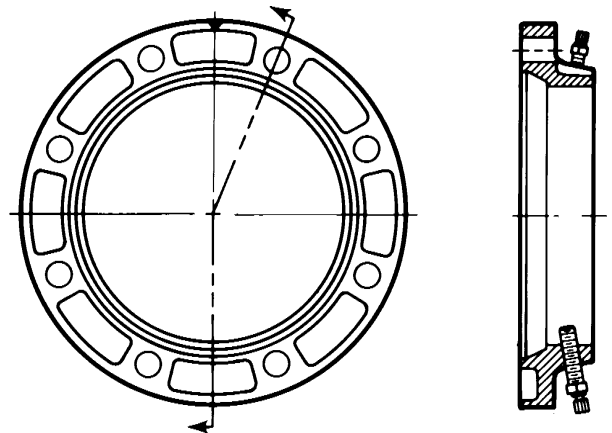


ADAPTER FLANGE



Wall Thickness Note:
Recommended for
ductile iron pipe Class
53 thru Class 56.

FM APPROVED



1. Place adapter flange and MJ gasket over the plain end of the pipe with the small side of the MJ gasket facing the flange side of the adapter flange.
2. Place the pipe end against flange to be joined and slip the MJ gasket into position against the flange. Make sure the gasket is evenly seated against the flange.
3. Slide adapter flange into position against the small (tapered) side of the MJ gasket and align the bolt holes. Insert the bolts and finger tighten the nuts to maintain position and alignment.
4. Snug up all nuts evenly. Alternating @ 180°, tighten the nuts to a torque of: **3" - 60 foot pounds; 4" thru 12" - 90 foot pounds.**
5. Snug up all set screws evenly around the pipe. Tighten the Torque Head Set Screws evenly, alternating at 180 degrees.

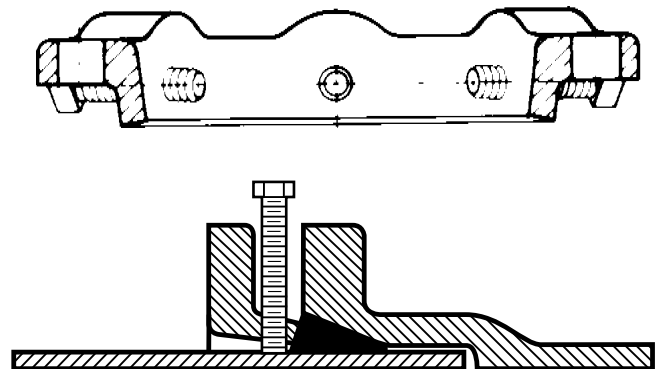
NOTE: THE TORQUE HEAD TOP WILL BREAK OFF AT THE RECOMMENDED SETTING OF 80-90 FT. LBS.
MAXIMUM DEFLECTION OF JOINT (2°)

RETAINER GLAND



Pipe Wall Thickness: Sizes 3"-12" are recommended for ductile iron pipe class 50 thru 56.
Sizes 14" thru 24" are recommended for ductile iron pipe class 53 thru 56.

1. Wash bell and plain end with soapy water, then slip gland and gasket over plain end with the small side of the gasket and ring side of of the gland facing the bell.
2. Slip plain end into bell. Brush soapy water on gasket. This lubricates the gasket and allows it to slip easily into place. Push gasket into bell making sure it is evenly in the bell gasket landing.
3. Slide the gland into position against the back of the gasket. Align bolt holes, insert T-bolts and tighten nuts to finger tight.
4. Snug up all T-bolt nuts evenly. Alternating at 180°, tighten the T-bolt nuts to a torque of:
3" - 60 foot pounds 4" thru 24" - 90 foot pounds.
5. Snug up all set screws evenly. Using a torque wrench, tighten the set screws alternating at 180° to the recommended torque value of 75 foot pounds. If required double check set screws immediately.



Maximum recommended deflection of joints

3" thru 12"-2°; 14" thru 30" - 1°