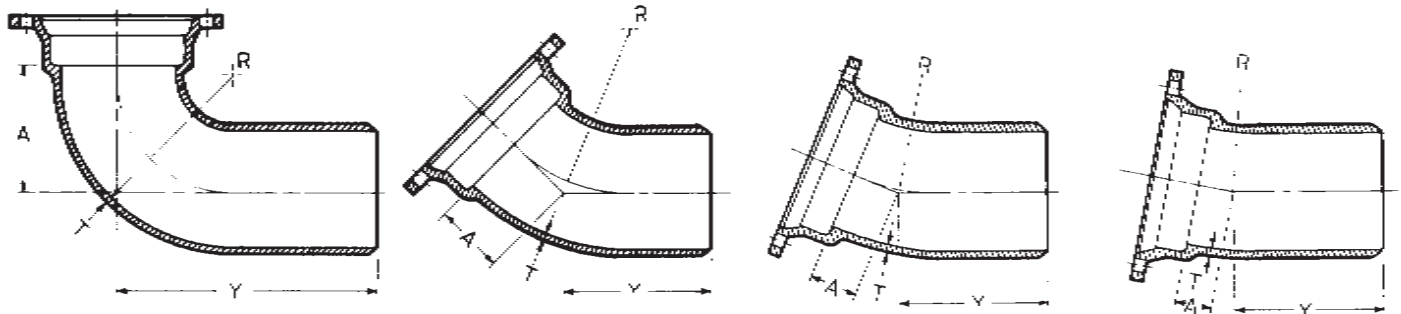


Tyler/Union

MECHANICAL JOINT C153 DUCTILE IRON COMPACT FITTINGS

Sizes 3" thru 12" UL Listed For Fire Main Equipment

BENDS



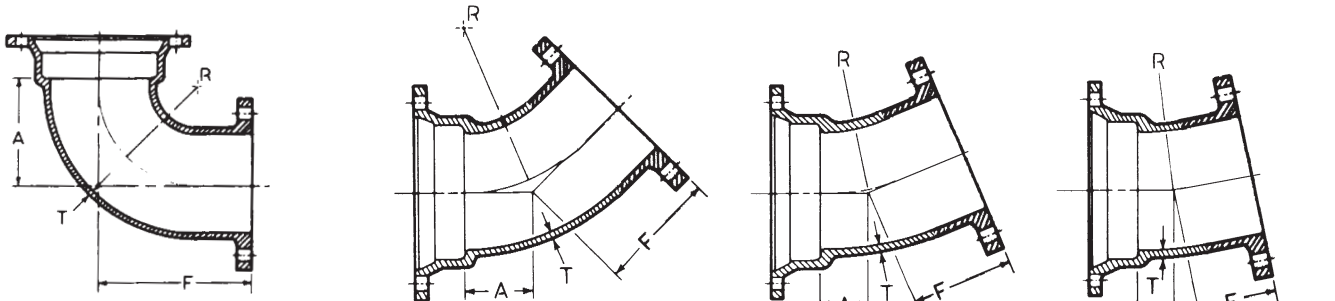
90° Bend MJ x PE (1/4)

45° Bend MJ x PE (1/8)

22 1/2° Bend MJ x PE (1/16)

11 1/4° Bend MJ x PE (1/32)

Size	Dimensions					Dimensions					Dimensions					Dimensions				
	T	A	Y	R	Weight	A	Y	R	Weight	A	Y	R	Weight	A	Y	R	Weight			
3	.34	3.5	9.0	2.5	18	2.0	7.5	2.41	17	1.50	7.00	2.51	19	1.25	6.75	7.62	15			
4	.35	4.0	9.5	3.0	26	2.5	8.0	3.56	22	1.75	7.25	3.81	20	1.50	7.00	5.12	20			
6	.37	6.0	11.5	5.0	45	3.2	8.7	5.49	38	2.25	7.75	6.35	33	1.50	7.00	5.12	32			
8	.39	7.5	13.0	7.0	64	4.0	9.5	8.44	55	2.84	8.34	11.80	51	2.05	7.55	15.80	44			
10	.41	9.5	15.0	9.0	108	5.0	10.5	10.88	78	3.35	8.85	14.35	66	2.31	7.81	18.36	60			
12	.43	9.0	14.4	6.0	114	6.0	11.5	13.25	104	3.50	9.00	12.70	89	2.56	8.06	20.90	79			
14	.51	12.0	20.0	11.5	219	5.5	13.4	10.85	165	3.93	11.93	17.25	152	2.59	10.59	21.25	137			
16	.52	13.0	21.0	12.5	254	6.0	14.0	13.25	206	3.98	11.98	17.50	181	2.62	10.62	21.50	161			
24	.62	17.0	25.0	15.5	710	7.5	16.6	14.69	460	9.00	17.66	37.69	455	9.00	26.12	12.00	475			
30	.68	21.5	30.5	--	865	10.5	19.5	--	715	6.75	15.75	--	600	--	--	--	--			



90° Bend MJ x Flange (1/4)

45° Bend MJ x Flange (1/8)

22 1/2° Bend MJ x Flange (1/16)

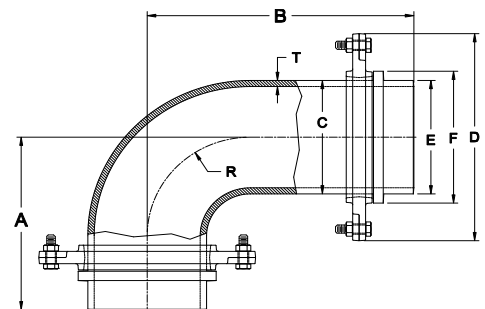
11 1/4° Bend MJ x Flange (1/32)

Size	Dimensions					Dimensions					Dimensions					Dimensions				
	T	A	R	F	Weight	A	R	F	Weight	A	R	F	Weight	A	R	F	Weight			
3	.34	3.5	2.5	5.5	21		
4	.35	4.0	3.0	6.5	28	2.50	3.56	4.0	34	1.75	3.81	4.0	34	1.50	5.12	4.0	19			
6	.37	6.0	5.0	8.0	45	3.25	5.49	5.0	57	2.25	5.35	5.0	57	1.50	5.12	5.0	30			
8	.39	7.5	7.0	9.0	73	4.25	7.93	5.5	83	2.50	7.62	5.5	83	1.75	7.70	5.5	50			
10	.41	9.5	9.0	11.0	113	5.00	9.76	6.5	122	3.00	10.16	6.5	122	2.00	10.25	6.5	75			
12	.43	10.5	10.0	12.0	141	6.00	12.19	7.5	159	3.50	12.70	7.5	159	2.25	12.82	7.5	88			
14	.51	12.0	11.5	14.0	217	5.50	10.85	8.5	207											
16	.52	13.0	12.5	15.0	280	6.00	12.02	9.5	290											

90° Swivel x Swivel Hydrant Ell

Size	Dimensions								
	T	A	B	C	D	E	F	R	
6	.37	10.5	15.5	6.90	11.2	6.81	7.98	6.0	74

* Weight includes two swivel glands.

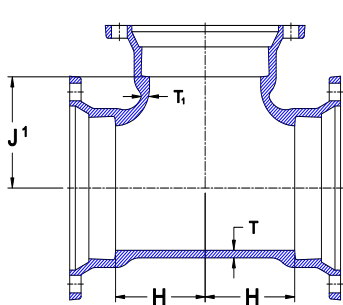


Tyler/Union

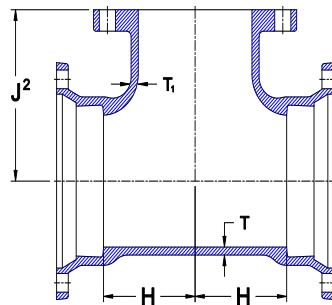
MECHANICAL JOINT C153 DUCTILE IRON COMPACT FITTINGS

Sizes 3" thru 12" UL Listed For Fire Main Equipment

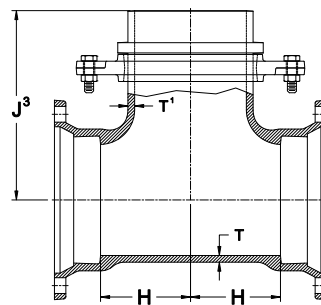
TEES



MJ Tee

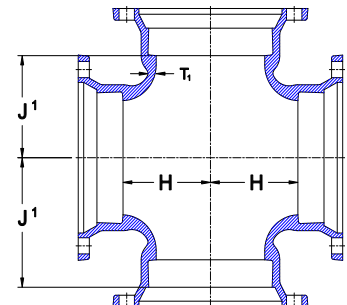


MJ x FE Tee



MJ x Swivel Tee

CROSS



Cross

Size	Dimensions						Weights			
	T	T ¹	H	J ¹	J ²	J ³	MJ	MJxFE	†MJxS	Cross
3	.34	.34	3.5	3.50	5.5	...	26	29	...	31
4x3	.35	.34	3.5	4.00	6.5	...	35	34	...	39
4	.35	.35	4.0	4.00	6.5	...	36	39	...	45
6x3	.37	.34	4.0	4.00	6.5	...	51	54
6x4	.37	.35	4.0	5.00	8.0	...	52	57	...	62
6	.37	.37	5.0	5.00	8.0	10.50	66	68	77	79
8x3	.39	.34	4.0	6.50	9.0	...	56
8x4	.39	.35	4.5	6.50	9.0	...	72	82	...	84
8x6	.39	.37	5.5	6.50	9.0	11.50	79	81	105	98
8	.39	.39	6.5	6.50	9.0	11.50	90	101	116	112
10x3	.41	.34	4.0	7.50	11.0	...	80
10x4	.41	.35	4.5	7.50	11.0	...	82	92	...	98
10x6	.41	.37	5.5	7.50	11.0	13.00	99	116	114	121
10x8	.41	.39	6.5	7.50	11.0	13.00	116	128	138	135
10	.41	.41	7.5	7.50	11.0	...	132	144	...	156
12x3	.43	.34	4.0	8.75	12.0	...	99
12x4	.43	.35	4.5	8.75	12.0	...	108	118	...	119
12x6	.43	.37	5.5	8.75	12.0	14.25	119	133	132	138
12x8	.43	.39	6.5	8.75	12.0	14.25	126	146	149	149
12x10	.43	.41	7.5	8.75	12.0	...	159	174	...	187
12	.43	.43	8.75	8.75	12.0	...	171	198	...	202
14x6	.51	.44	6.5	10.50	14.0	16.00	183	205	211	210
14x8	.51	.45	7.5	10.50	14.0	...	211	231
14x10	.51	.46	8.5	10.50	14.0	...	229	244	...	255
14x12	.51	.47	9.5	10.50	14.0	...	245	284	...	269
14	.51	.51	10.5	10.50	14.0	...	281	291	...	299
16x6	.52	.45	6.5	11.50	15.0	17.00	222	230	243	250
16x8	.52	.46	7.5	11.50	15.0	...	245	248	...	264
16x10	.52	.47	8.5	11.50	15.0	...	265	287	...	286
16x12	.52	.48	9.5	11.50	15.0	...	277	312	...	312
16x14	.52	.51	10.5	11.50	15.0	...	317	348
16	.52	.52	11.5	11.50	15.0	...	337	324	...	457
30	.66	.66	22.0	22.00	1840
36	.74	.74	26.0	26.0	2655

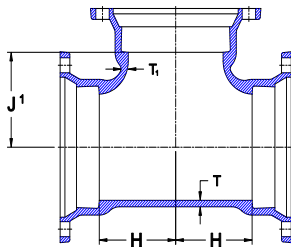
† Weights include swivel gland

Tyler/Union

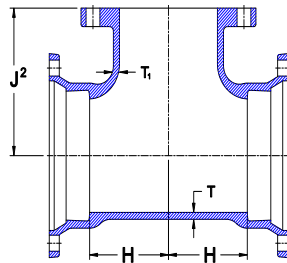
MECHANICAL JOINT C153 DUCTILE IRON COMPACT FITTINGS

Sizes 3" thru 12" UL Listed For Fire Main Equipment

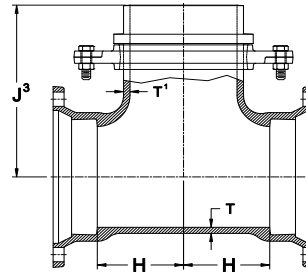
TEES (Continued)



MJ Tee



MJ x FE Tee



MJ x Swivel Tee

Size	T	T ¹	H	Dimensions			MJ	Weights	
				J ¹	J ²	J ³		MJxFE	†MJxS
18x6	.59	.44	6.5	14.5	15.5	18.0	275	261	279
18x8	.59	.45	7.5	14.5	14.5	...	280	351	...
18x10	.59	.47	8.5	12.5	286
18x12	.59	.49	9.5	12.5	372
18x14	.59	.56	10.5	12.5	415
18x16	.59	.57	11.5	12.5	445
18	.59	.59	13.0	12.5	490
20x6	.60	.44	7.0	16.0	17.0	19.5	335	362	358
20x8	.60	.45	8.0	14.0	390
20x10	.60	.47	9.0	14.0	417
20x12	.60	.49	10.0	14.0	460
20x14	.60	.56	11.0	14.0	475
20x16	.60	.57	12.0	14.0	530
20x18	.60	.59	13.0	14.0	560
20	.60	.60	14.0	14.0	605
24x6	.62	.44	7.0	18.0	19.0	21.5	465	451	457
24x8	.62	.45	8.0	16.0	475
24x10	.62	.47	9.0	16.0	516
24x12	.62	.49	10.0	18.0	549	580	...
24x14	.62	.56	11.0	16.0	585
24x16	.62	.57	12.0	19.5	625	744	...
24x18	.62	.59	13.0	16.0	675
24x20	.62	.60	15.0	17.0	740
24	.62	.62	17.0	17.0	844
30x6	.66	.36	7.00	20.0	700
30x8	.66	.38	8.50	20.0	739
30x12	.66	.42	10.0	20.0	739
30x16	.66	.50	12.5	20.0	959
30x20	.66	.57	15.0	20.0	995
30x24	.66	.61	16.0	20.0	1160
30	.66	.66	20.0	20.0	1323
36x16	.74	.50	12.5	23.5	1350
36x24	.74	.61	16.0	23.5	1498
36x30	.74	.66	20.0	23.5	1555
36	.74	.74	23.5	23.5	1900
42	.82	.82	30.0	30.0	3175

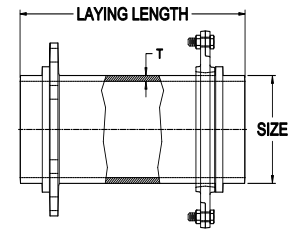
† Weights include swivel gland.

MJ GLANDS



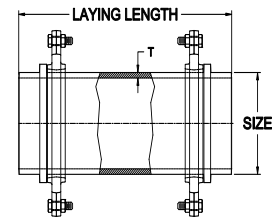
Glands			
Size	Weight	Size	Weight
3	3	12	10
4	4	14	17
6	5	16	21
8	6	18	22
10	9	20	32
		24	37

Swivel Glands, page 19-20
Retainer Glands, page 7



Swivel x Solid Adapter with Swivel Gland

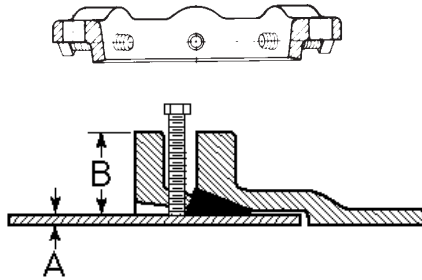
Size by Laying Length	Wall	
	Thickness	Weight
6x13	.37	52
6x18	.37	65
6x24	.37	69
8x12	.39	52



Swivel x Swivel Adapter

Size by Laying Length	Wall	
	Thickness	Weight
6x12	.37	28
6x18	.37	49
6x24	.37	52

*RETAINER GLAND ASSEMBLY



See Installations Instructions..... Page 50

Size	Pressure Rating, psi	Gland O.D. B	Pipe O.D. A	D.I. Pipe Wall Class	No of Set Screws	Size of Set Screws	Gland Weight	Weight w/Access.
3	350	7.69	3.96	50-56	4	5/8x2	4	8
4	350	9.12	4.80	50-56	4	5/8x2	5	11
6	350	11.12	6.90	50-56	6	5/8x2	9	16
8	250	13.37	9.05	50-56	9	5/8x2	13	21
10	250	15.62	11.10	50-56	12	5/8x2	17	26
12	150	17.88	13.20	50-56	16	5/8x2	20	28
14	250	20.25	15.30	53-56	20	5/8x2 1/2	44	55
16	200	22.50	17.40	53-56	24	5/8x2 1/2	54	64
18	200	24.75	19.50	53-56	24	5/8x2 1/2	62	72
20	200	27.00	21.60	53-56	28	5/8x3	76	91
24	150	31.50	25.80	53-56	32	5/8x3	103	118

* Not included in AWWA C110

Pipe Wall Thickness:

Sizes 3"-12" are recommended for ductile iron pipe class 50 thru 56. Sizes 14" thru 24" are recommended for ductile iron pipe class 53 thru 56.

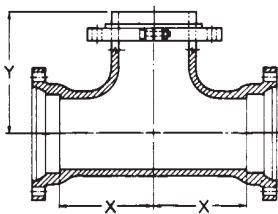
DUCTILE IRON RETAINER GLANDS

Mechanical Joint Retainer Glands are designed to provide a method for restraining mechanical joint pipe and fittings and other standardized mechanical joints against possible joint separation, rupture or blow-out caused by internal water pressure.

The set screws are square-headed with Type C knurled cup points, and are shipped already assembled in the Glands. They are manufactured of 4140 grade alloy steel, and are heat treated to a Rockwell "C" 45/53 case hardness. Tee-head bolts and gaskets are not included, but may be ordered separately. Recommended torque for set screws is 75 foot pounds, and set screws on opposite sides of the glands should be tightened alternately.

Tee-head bolt hole size and spacing are equal to MJ Glands as shown in AWWA C-111. Standard mechanical Joint gaskets as shown in C-111 should be used.

TEES



MJ x MJ x Swivel

Size	Dimensions		Weight
	X	Y	
6	8.0	10.5	150
8x6	9.0	11.5	199
8	9.0	11.5	210
10x6	11.0	13.5	267
12x6	12.0	14.5	346
16x6	15.0	17.5	619
16x8	15.0	17.5	649
30x6	18.0	24.5	2070

All weights shown include the Swivel Gland

MJ GLAND



Size	Gland Weight	
	Wt. Pack	Gland Only
2	5	3
3	7	4
4	10	6
6	16	10
8	25	16
10	30	19
12	40	26
14	45	34
16	55	54
18	65	52
20	85	73
24	105	91
30	220	90
36	301	127

ANSI/AWWA C110/A21.10, ANSI/AWWA C111/A21.11

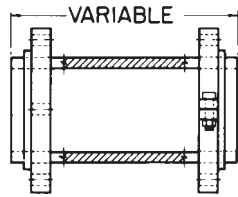
Tyler Pipe/Utilities Division • Box 2027 • Tyler, Texas 75710 • (800) 527-8478

Union Foundry Company • Box 309 • Anniston, Alabama 36202 • (800) 226-7601

Tyler/Union

**DUCTILE IRON C110 FULL BODY
MECHANICAL JOINT ELLS, ADAPTERS
AND GLANDS**
For Valve and Hydrant Connections

ADAPTERS



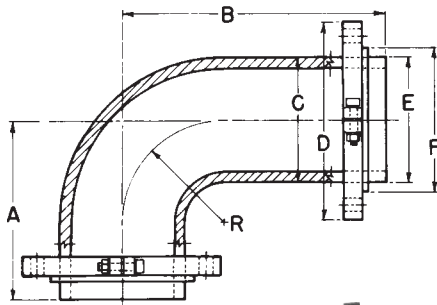
Swivel x Solid Adapter

Size by Laying Length	Wall Thickness	Weight*
4x13	.52	52
6x12	.55	84
6x18	.55	91
6x24	.55	105
6x36	.55	156
8x13	.60	126
12x13	.75	186

*Weights with Gland.

Other Swivel Hydrant Fittings, Pages 3, 4 and 5.

ELLS



***90° Swivel x Swivel Ell
(Not Included In AWWA C110)**

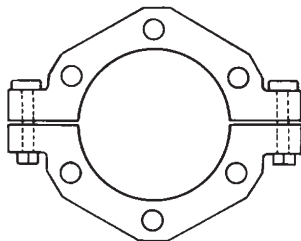
Size	Wall Thickness	Dimensions							*Weight
		A	B	C	D	E	F	R	
6	.55	10.5	15.5	7.10	11.12	6.90	8.02	6.0	106
8	.60	11.5	16.5	9.20	13.37	9.05	10.17	7.0	156

* With 2 Swivel Glands



SWIVEL GLAND ASSEMBLY

Used with swivel fittings, the TYLER Swivel Gland, with its rotating feature, permits the installer to meet any grade requirements regardless of bolt-hole alignment. In addition, the system permits stiff connections without braces, blocking or strapping.



Swivel Glands**

Size	Weight
12	30

** Not included in AWWA C110.

NOTE: When ordering glands separately,
(1) Specify TYLER UPCode Number,
(2) Description, and
(3) Size of fitting to be joined.

ANSI/AWWA C110/A21.10, ANSI/AWWA C111/A21.11

Tyler Pipe/Utilities Division • Box 2027 • Tyler, Texas 75710 • (800) 527-8478
Union Foundry Company • Box 309 • Anniston, Alabama 36202 • (800) 226-7601