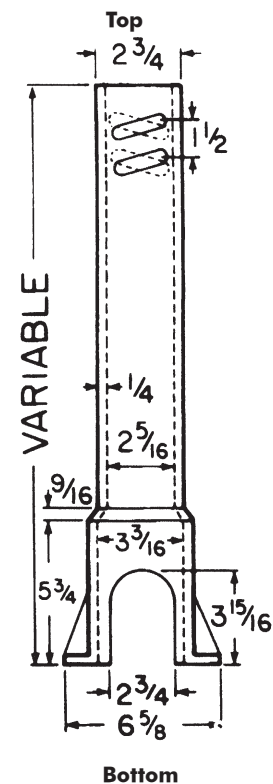
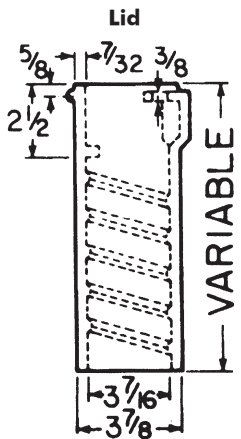
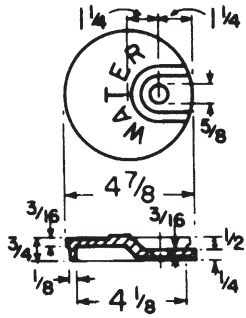


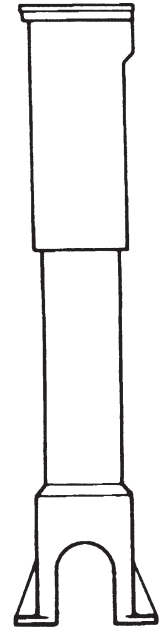
Tyler/Union

CAST IRON SERVICE BOXES, ADJUSTABLE
 Accommodates 2" through 1 1/4" curbstops; enlarged base
 Accommodates 2" curbstops; 2 1/2" shaft - screw type

6500 SERIES, SCREW TYPE WITH WATER LID



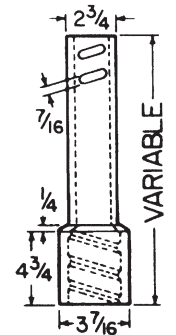
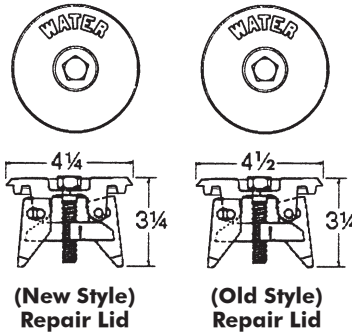
Box (Components)	UPCode 67610	Ship Code	Extension In Inches	Weight
89-A (12T & 12B)	146681	S	15-21	20
90-B (12T & 15B)	146742	S	18-24	21
90-C (15T & 15B)	146803	S	21-27	22
91-C (15T & 21B)	146865	S	24-33	24
92-C (15T & 27B)	146926	S	30-39	26
92-D (18T & 27B)	146988	S	30-42	28
93-D (18T & 33B)	147046	S	36-48	32
93-E (24T & 33B)	147114	S	36-54	37
94-E (24T & 39B)	147183	S	42-60	41
95-E (30T & 39B)	147251	S	41-64	44
100-E (24T & 21B & #154 Ext)	147312	S	54-72	50
100-F (30T & 21B & #154 Ext)	147381	S	54-78	53
101-F (30T & 27B & #154 Ext)	147459	S	60-84	55



Box Assembled

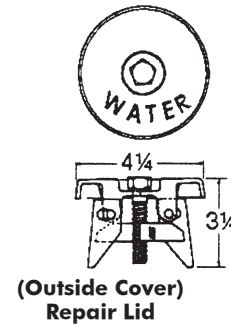
TOP SECTION WITH WATER LID

Item	UPCode 67610	Ship Code	Weight
12T	147510	S	11
15T	147589	S	12
18T	147640	S	14
24T	147701	S	19
30T	147763	S	22



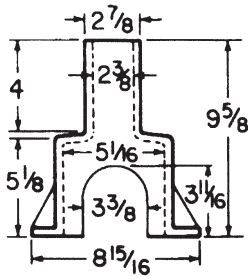
BOTTOM ONLY

Item	UPCode 67610	Ship Code	Weight
12B	144670	S	9
15B	144687	S	10
21B	144694	S	12
27B	144700	S	14
33B	144717	S	18
39B	144724	S	22



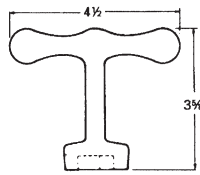
EXTENSION

Item	Height Increase
151	9
152	16
153	28
154	30



ENLARGED BASE For 2" Curbstop

Item	Height Increase
6500	6"



Wrench



Brass Screw
Std. WW Pentagon

6500 SERIES PARTS

Item	UPCode 67610	Ship Code	Wt.
151 Ext	144762	S	7.0
152 Ext	144779	S	12.0
153 Ext	144786	S	17.0
154 Ext	144793	S	19.0
Enlarged Base	144809	S	8.0
2 1/2" "Water Lid"	144830	S	1.0
Brass Screw (Std. WW Pentagon)	144816	S	...
Wrench (Std. WW Pentagon)	144908	S	0.5
2 1/2" "Repair Lid Old"	144915	S	4.5
2 1/2" "Repair Lid New"	144922	S	4.5
2 1/2" "Repair Lid Outside Cover"	381518	S	4.5