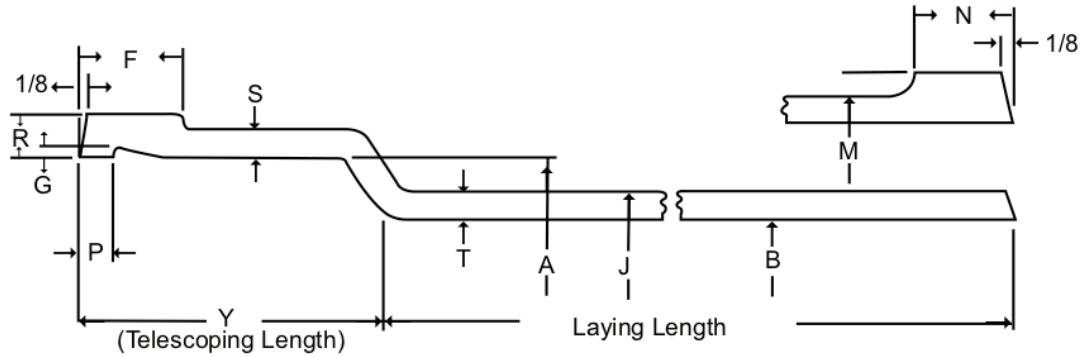




PIPE & COUPLING

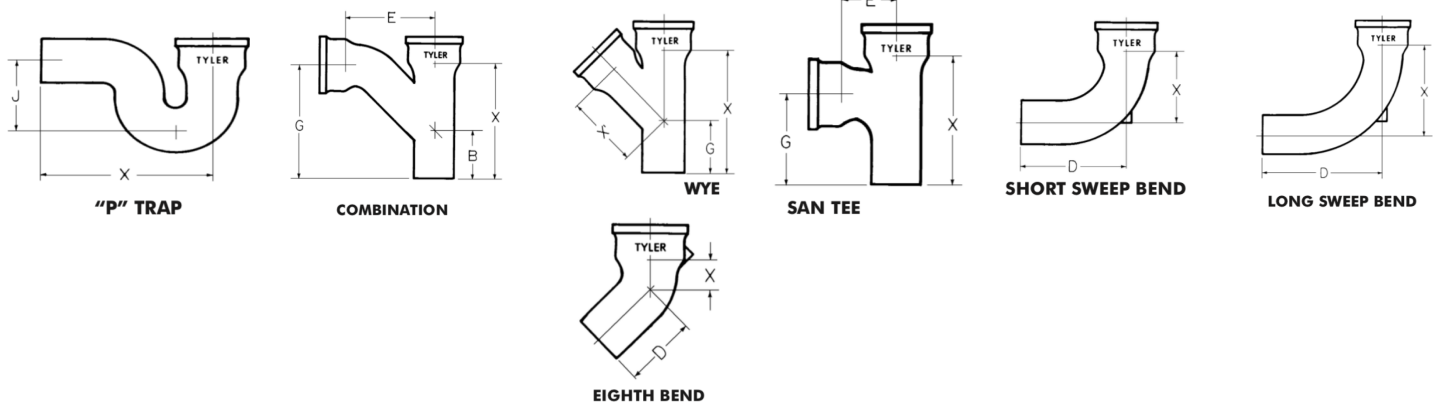
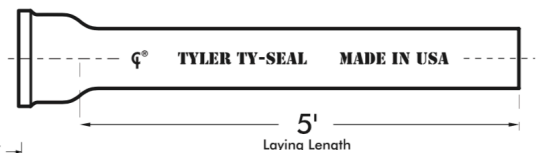
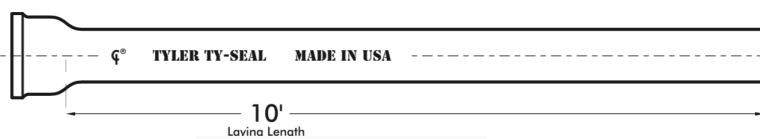
# SUBMITTAL EXTRA HEAVY SOIL PIPE

Tyler Pipe/Soil Pipe Division • 11910 CR 492 • Tyler, TX 75706 • (800) 527-8478



## Extra-Heavy Cast Iron Soil Pipe and Fittings:

Size Availability	Inside Diameter of Hub	Outside Diameter of Hub	Telescoping Length	Inside Diameter of Barrel	Thickness of Barrel	
	A	J	Y	B	T	
					Norm	Min
2"	3.06 [77.72]	2.38 [60.45]	2.50 [63.5]	2.00 [50.8]	0.19 [4.83]	0.16 [4.06]
3"	4.19 [106.43]	3.50 [88.9]	2.75 [69.85]	3.00 [76.2]	0.25 [6.35]	0.22 [5.59]
4"	5.19 [131.83]	4.50 [114.3]	3.00 [76.2]	4.00 [101.6]	0.25 [6.35]	0.22 [5.59]
5"	6.19 [131.83]	5.50 [139.7]	3.00 [76.2]	5.00 [127.0]	0.25 [6.35]	0.22 [5.59]
6"	7.19 [182.63]	6.50 [165.1]	3.00 [76.2]	6.00 [152.4]	0.25 [6.35]	0.22 [5.59]
8"	9.50 [241.30]	8.62 [218.5]	3.50 [88.9]	8.00 [203.2]	0.31 [7.87]	0.25 [6.35]
10"	11.62 [295.15]	10.75 [273.05]	3.50 [88.9]	10.00 [254.0]	0.37 [9.40]	0.31 [7.87]
12"	13.75 [349.25]	12.75 [323.95]	4.25 [107.95]	12.00 [304.8]	0.37 [9.40]	0.31 [7.87]
15"	16.95 [430.53]	15.88 [403.35]	4.25 [107.95]	15.00 [381.0]	0.44 [11.18]	0.38 [9.65]



Extra Heavy Soil Pipe & Fittings are manufactured in accordance with ASTM A74.